

ITEM 2a: EXTENT OF FOOTPATH UPGRADE EXTENT

NEW PAVEMENT: HAVILAH ST  
BROOM FINISHED NATURAL  
GREY CONCRETE



SCALE 1:400 0 10 20m

NEW PAVEMENT: VICTORIA AVE + ARCHER ST  
NATURAL STONE  
(HONEY JASPER GRANITE)



VICTORIA AVENUE

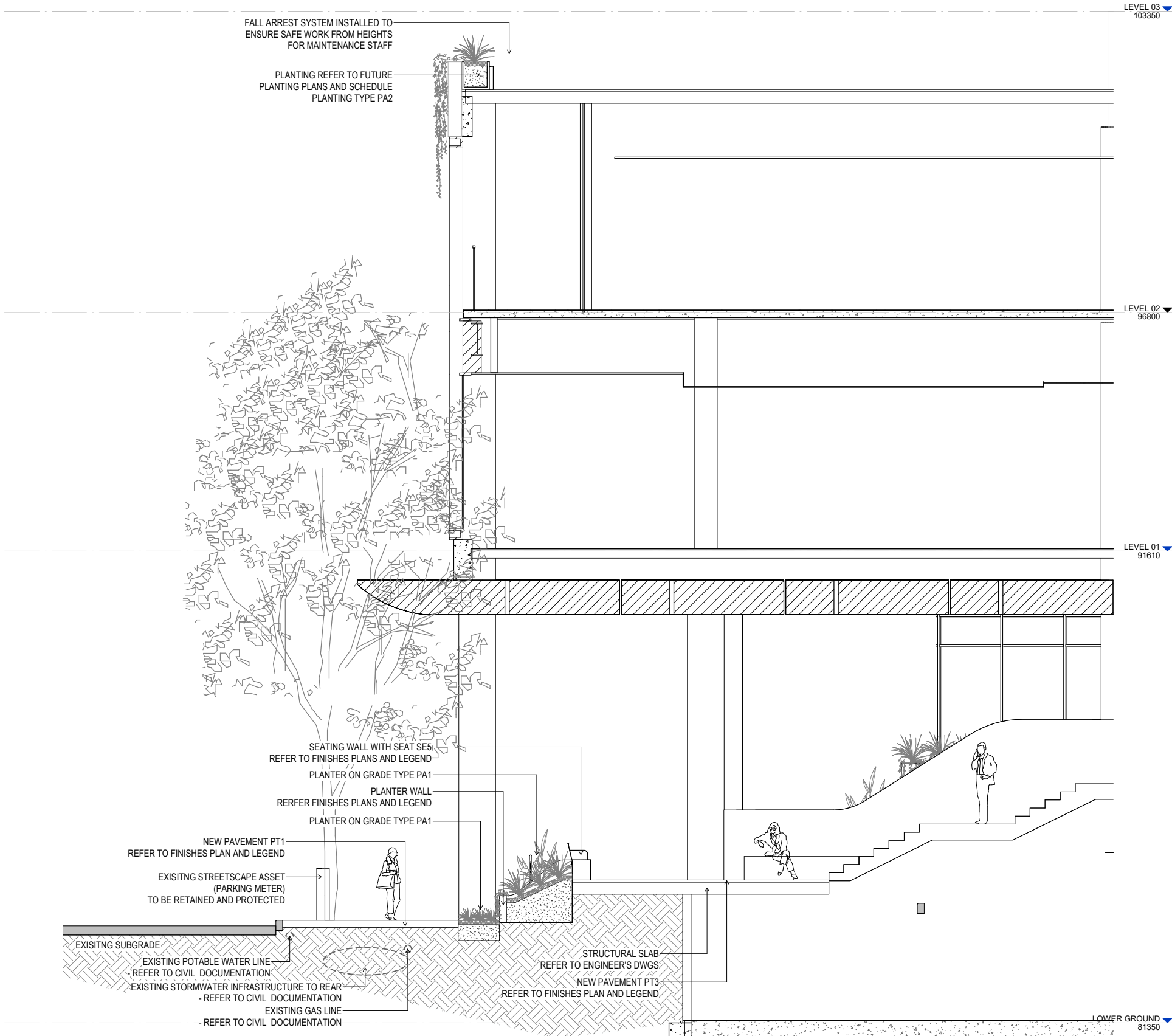
KEY PLAN



SCALE 1:100 @ A3



NOTE:  
SERVICES ARE SHOW INDICATIVELY ONLY  
REFER TO CIVIL DOCUMENTATION FOR FURTHER INFORMATION



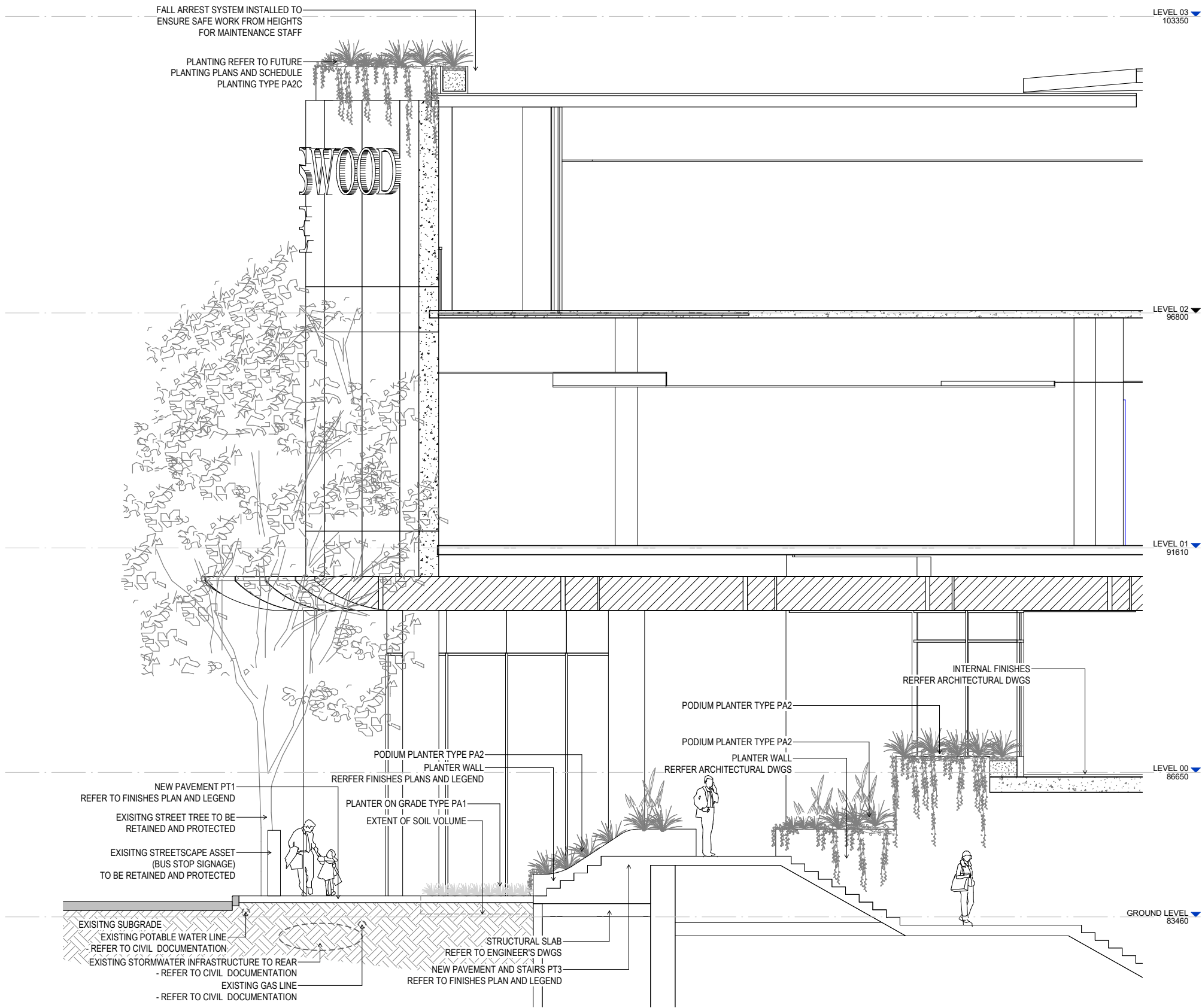


VICTORIA AVENUE

KEY PLAN



NOTE:  
SERVICES ARE SHOW INDICATIVELY ONLY  
REFER TO CIVIL DOCUMENTATION FOR FURTHER INFORMATION



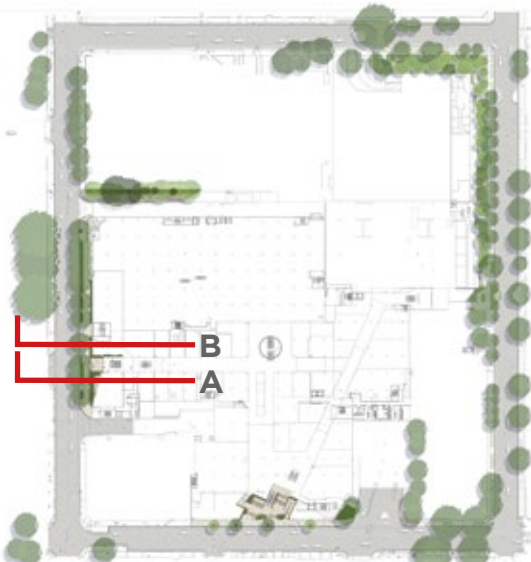
SCALE 1:100 @ A3



NOTE:  
SERVICES ARE SHOW INDICATIVELY ONLY  
REFER TO CIVIL DOCUMENTATION FOR FURTHER INFORMATION

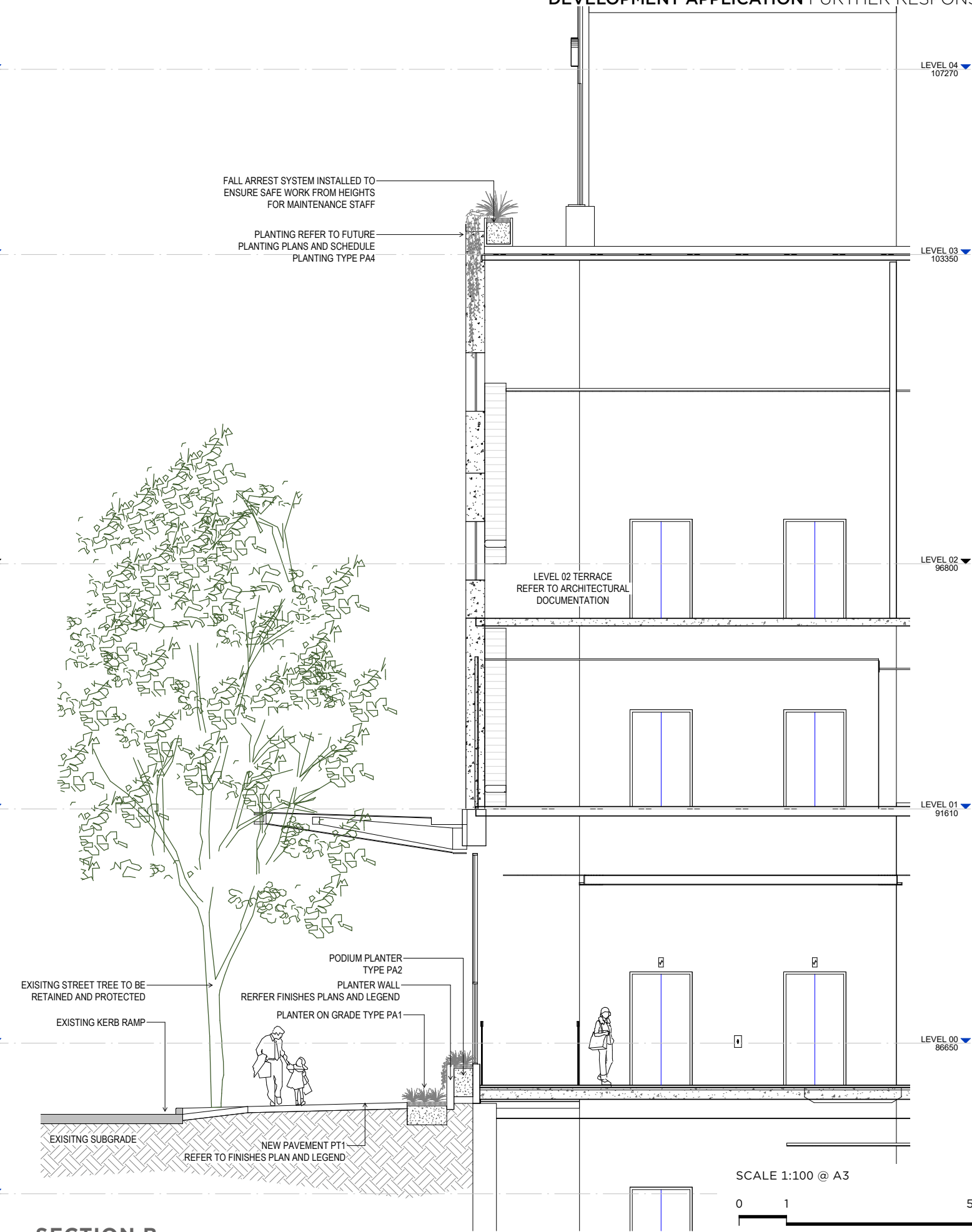
ARCHER STREET

KEY PLAN



SECTION A

Vicinity Centres



SECTION B

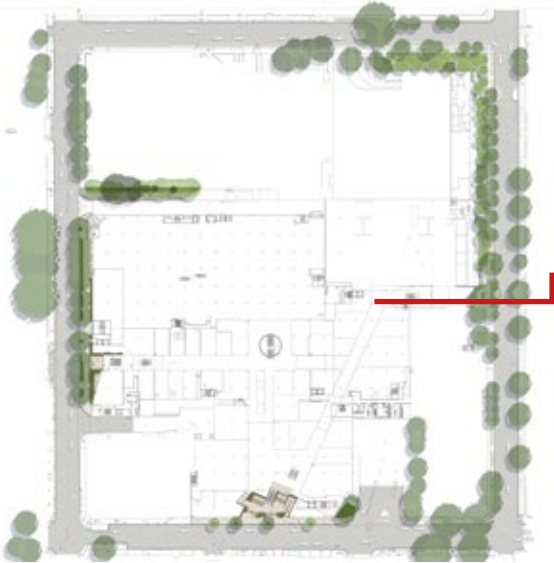
23.05.23 [1]

SCALE 1:100 @ A3

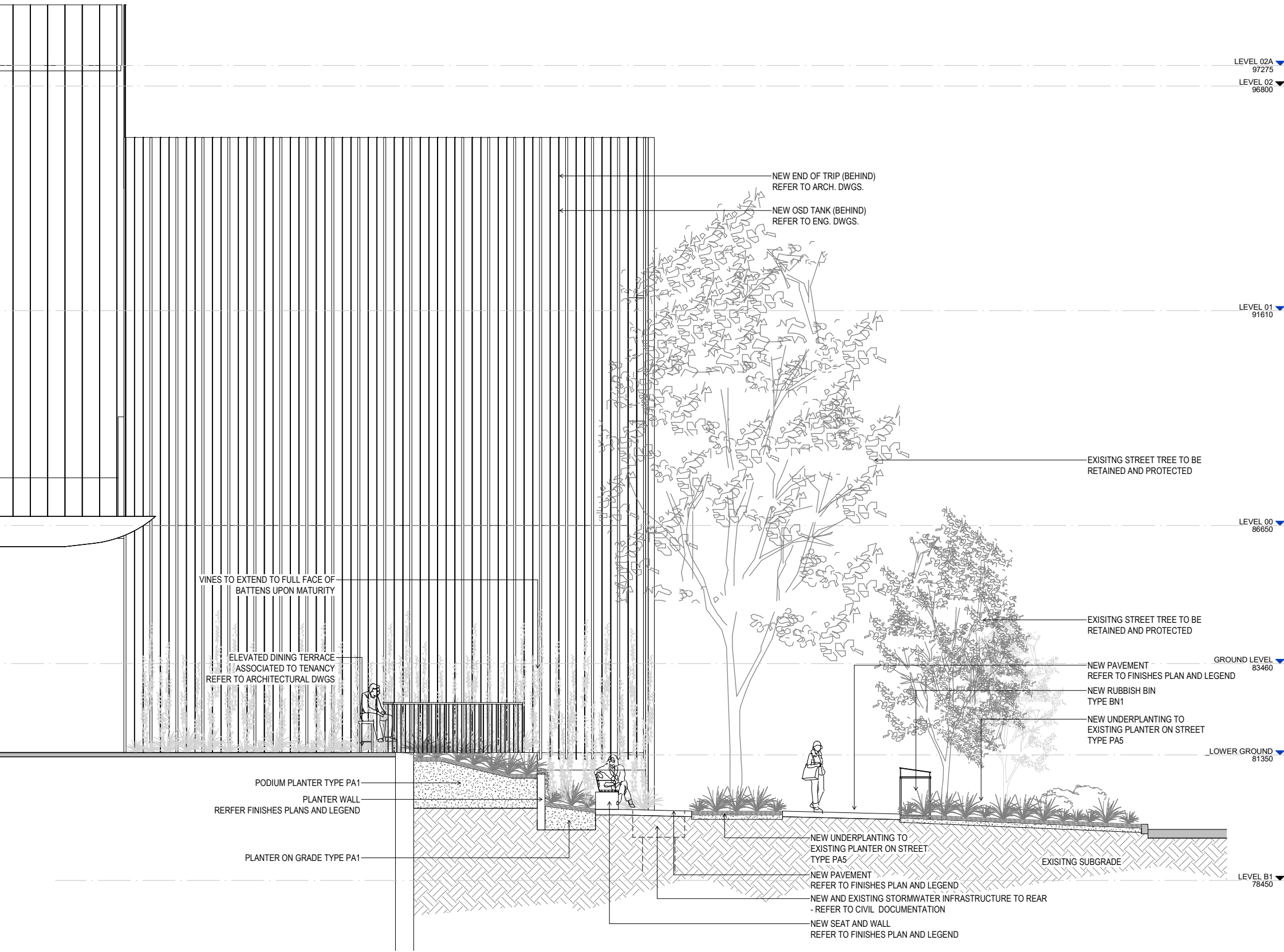


HAVILAH STREET

KEY PLAN



NOTE:  
SERVICES ARE SHOW INDICATIVELY ONLY  
REFER TO CIVIL DOCUMENTATION FOR FURTHER INFORMATION



SCALE 1:100 @ A3





ITEM 2c: STREETSCAPE ASSETS

**NOTE:**  
All signage, bus stop information, parking meters, post boxes and traffic lights to be retained and protected during construction.  
All bins, bike racks and seating to be replaced. Final detail to be resolved in CC phase.



**PROPOSED STREETSCAPE ASSETS:**

- 1 new bike racks to accommodate 12 bikes
- 2 propriety seat with back and arm rests mounted to seating wall
- 3 new waste bin
- 4 new tree (refer to Item 12d response)
- 5 new bike racks to accommodate 4 bikes
- 6 seat with backrest and arm rests
- 7 custom seat with back and arm rests mounted to seating wall
- 8 new seating wall





BICYCLE RACKS

- PRODUCT: LINEA BICYCLE STAND [BST07]
- SIZE: 1550L X 620W X 1000H
- MOUNT: SURFACE FIXED
- FRAME: DARK BRONZE MATT 9068184K
- BATTENS: NO BATTEN
- SUPPLIER: STREET FURNITURE AUSTRALIA



RUBBISH BINS

- PRODUCT: FRAME BIN [WBE-nF120-BAT]
- SIZE: 640L x 640W x 1200H (mm)
- MODULE: SINGLE • ROOF: ANGLED
- FRAME: STAINLESS 304 - POWDER COATED
- FINISH: DARK BRONZE MATT 9068184K
- BODY: ECO CERTIFIED HARDWOOD OILED
- MOUNTING: SURFACE FIXED
- SUPPLIER: STREET FURNITURE AUSTRALIA



SEAT - SURFACE FIXED

- PRODUCT: LINEA SEAT [LIS10] 3 SEATER WITH ARM RESTS
- SIZE: 1800L X 540W X 790H
- MOUNT: SURFACE FIXED
- FRAME: DARK BRONZE MATT 9068184K
- BATTENS: SPOTTED GUM
- SUPPLIER: STREET FURNITURE AUSTRALIA



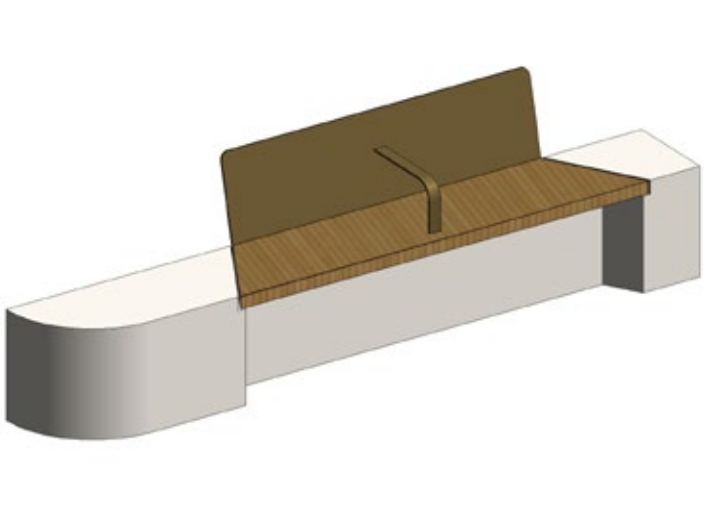
SEAT - WALL MOUNTED

- PRODUCT: LINEA SEAT [LIS10] 3 SEATER WITH ARM RESTS
- SIZE: 1800L X 540W
- MOUNT: PLINTH FIXED
- FRAME: DARK BRONZE MATT 9068184K
- BATTENS: SPOTTED GUM
- SUPPLIER: STREET FURNITURE AUSTRALIA



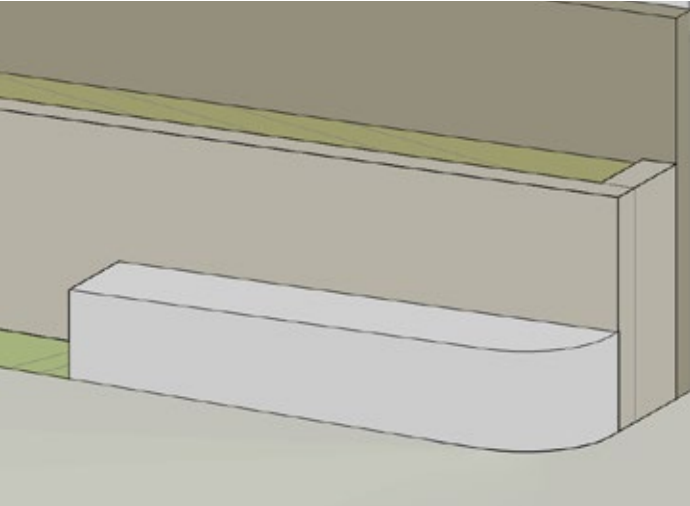
CUSTOM SEAT

- OFF-FORM CONCRETE RAISED SEATING WALL WITH EXTERIOR SURFACE FINISH, TIMBER BATTEN AND POWDER COATED STEEL BACK AND ARMREST
- BASE: ACID WASH WHITE CONCRETE
- TOP: SPOTTED GUM BATTENS
- BACK + ARM REST: 8MM POWDER COATED STEEL PLATE



SEATING WALL

- OFF-FORM CONCRETE RAISED SEATING WALL WITH EXTERIOR SURFACE FINISH
- BASE: ACID WASH WHITE CONCRETE



TREE SURROUNDS

- GALVANISED FRAME WITH RESIN BOUND GRAVEL
- SIZE: 1200 X1200
- FRAME FINISH: HOT DIPPED GALVANISED STEEL
- INLAY: RESIN BOUND GRAVEL
- SUPPLIER: STONE SET OR APPROVED EQUIVALENT
- SIZE + COLOUR: 6mm TAN
- INSTALLED TO MANUFACTURERS SPECIFICATION



PAVEMENT

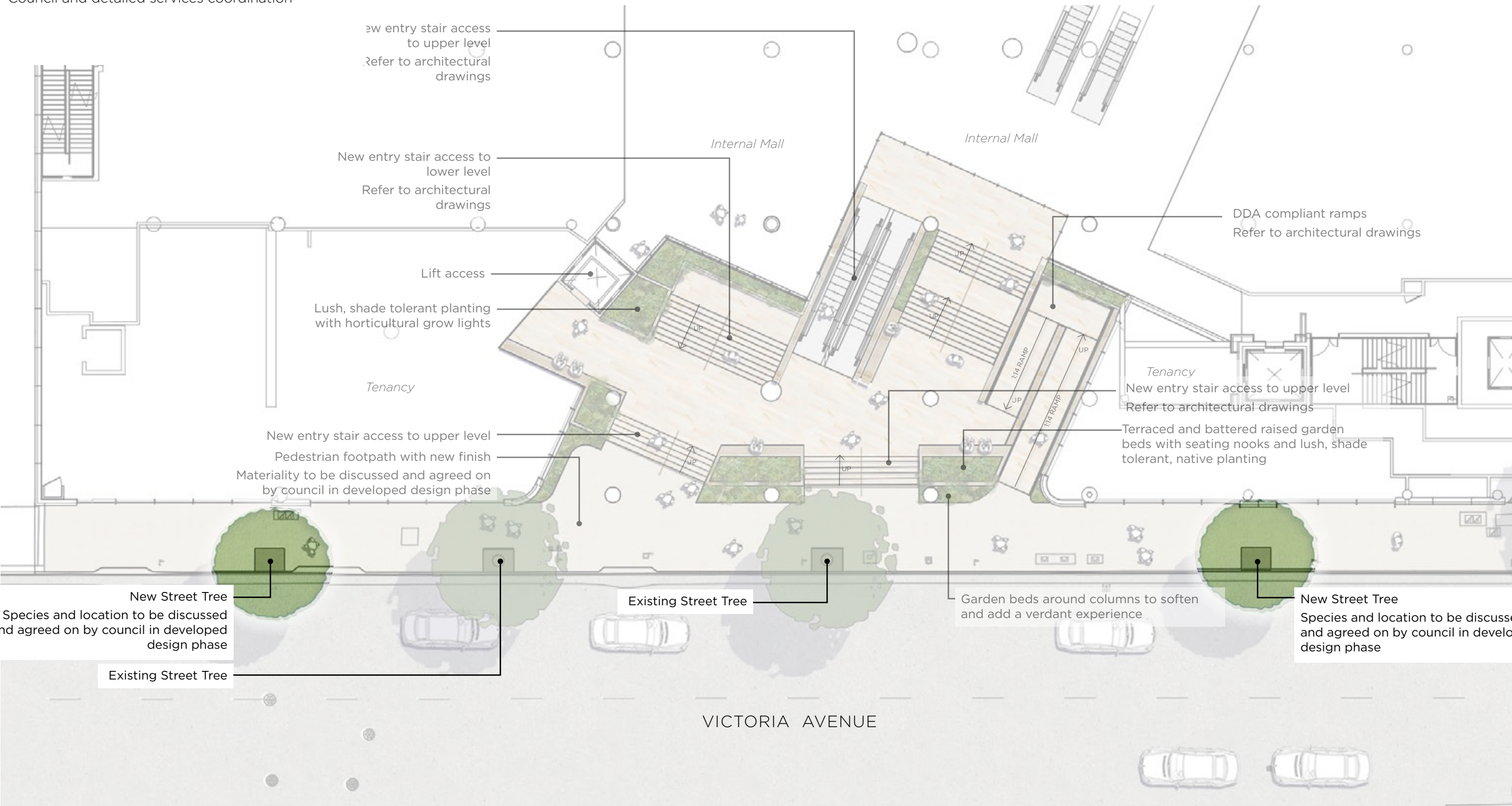
- GRANITE PAVER TO PUBLIC REALM
- ARCHER STREET + VICTORIA AVENUE ONLY
- TYPE: GRANITE • SIZE: 600 X 400 X 30MM
- FINISH: EX-FOLIATED + VARIOUS
- COLOUR: HONEY JASPER
- SUPPLIER: 'SAM THE PAVING MAN'
- ALLOW FOR PENETRATIVE SEALANT, APPLIED TO MANUFACTURER'S SPECIFICATION





ITEM 2d: VICTORIA AVENUE STREET TREE PLANTING

**NOTE:**  
Final tree placement is subject to review with Council and detailed services coordination



SCALE 1:200 @ A3  
0 5 10m



ITEM 6: TREE PLANTING OFFSET

PROPOSED TREES:

HAVILAH STREET + MALVERN AVE	29
ARCHER STREET	10
VICTORIA AVENUE	2
LEVEL 03 ROOFTOP	1
<hr/>	
TOTAL	42

PROPOSED SPECIES:

- + *Allocasuarina torulosa*
- + *Angophora costata*
- + *Backhousia myrtifolia*
- + *Eucalyptus saligna*
- + *Elaeocarpus eumundi*
- + *Elaeocarpus reticulatus*
- + *Tristaniopsis laurina*

